



GREENSKY POWER®

杭州绿天新能源科技有限公司
Greensky Power Company Limited

ADD:No.597 Bin'an Rd.,Hangzhou 310052,China

TEL:+86-571-88195488

FAX:+86-571-88194366

Zip Code:310052

Email:info@greensky-power.com

Web:www.greensky-power.com



GREENSKY POWER®



BLDC MOTORS

无刷直流电机



杭州绿天新能源科技有限公司
Greensky Power Company Limited



GREENSKY POWER
Once and forever



Established in 2011, Greensky Power Company Limited has been dedicated to the design and manufacturing of high-quality micro electric motors and drivers. Our products are extensively applied across a wide range of sectors including home appliances, industrial equipment, medical devices, transportation, and entertainment. Key end-use applications include e-bikes, electric kayaks, lawn mowers, water and oil pumps, and pellet boilers.



With the headquarter located in Hangzhou, China, Greensky operates two manufacturing facilities in mainland China, with a third facility currently under construction in Thailand, and a sales and distribution center in Chicago, USA. By the end of 2025, Greensky's production capacity is projected to reach 3 million motors annually.



Renowned for expertise in developing motors and drivers of consistent and superior quality, Greensky ensures optimal performance for the integrated motor solutions. As expressed in the company's slogan, 'Once and Forever, our core commitment is to fostering long-term customer loyalty through the provision of outstanding products and services.

GSBLD22R Series

• Motor Specification

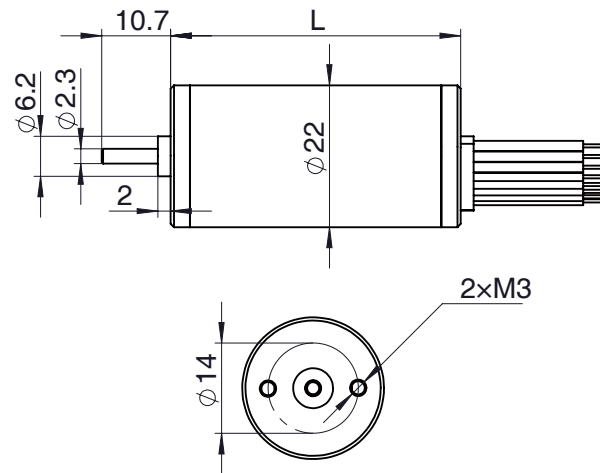
	22L45	22L70
· Number of poles	8 P	8 P
· Number of phases	3 PH	3 PH
· Nominal voltage	24 V	24 V
· No load speed	5000 RPM	4300 RPM
· Peak current	1.1 A	2.1 A
· Nominal speed	4600 RPM	3800 RPM
· Nominal torque	8 mNm	20 mNm
· Nominal current	0.37 A	0.7 A
· Peak torque	24 mNm	60 mNm
· Nominal power	3.8 W	8 W
· Line-to-line resistance	21 Ω	12 Ω
· Line-to-line inductance	6 mH	4.5 mH
· Torque constant	21.8 mNm/A	28.5 mNm/A
· Back EMF	2.2 mV/rpm	2.65 mV/rpm
· Rotor inertia	0.67 g.cm ²	1.34 g.cm ²
· Motor length	45 mm	70 mm



• Wiring Instructions

TYPE	COLOR	FUNCTIONS
AWG22	Yellow	Phase 1
	Blue	Phase 2
	Green	Phase 3
AWG26	Red	VHall
	Black	GND
	Purple	Hall 1
	White	Hall 2
	Orange	Hall 3

• Dimensions



• Mechanical Parameters Ball Bearings

	UNIT
Radial play	0.02mm@450g
Axial play	0.08mm@450g
Max Radial force	5N@10mm
Max Axial force	2N

• Other parameters

	TEMPERATURE
Winding Type	Star connection
Hall Effect Angle	120 degree
Dielectric Strength	600VAC/1S
Insulation Resistance	100MΩ, 500VDC
Insulation class	Class B
Ambient Temperature	-20°C ~ +50°C

GSBLD28R Series

• Motor Specification

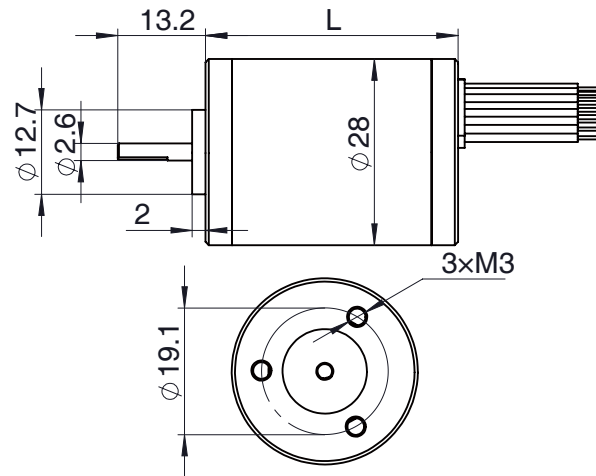
	28L38	28L77
· Number of poles	4 P	4 P
· Number of phases	3 PH	3 PH
· Nominal voltage	24 V	24 V
· No load speed	12000 RPM	4500 RPM
· Peak current	2.5 A	3.4 A
· Nominal speed	10000 RPM	4000 RPM
· Nominal torque	14.5 mNm	51 mNm
· Nominal current	0.9 A	1.36 A
· Peak torque	40 mNm	127 mNm
· Nominal power	15.2 W	21.3 W
· Line-to-line resistance	4 Ω	3.8 Ω
· Line-to-line inductance	1.7 mH	2.2 mH
· Torque constant	16 mNm/A	37.4 mNm/A
· Back EMF	1.25 mV/rpm	2.77 mV/rpm
· Rotor inertia	3.7 g.cm ²	11 g.cm ²
· Motor length	38 mm	77 mm



• Wiring Instructions

TYPE	COLOR	FUNCTIONS
AWG22	Yellow	Phase 1
	Blue	Phase 2
	Green	Phase 3
AWG26	Red	VHall
	Black	GND
	Purple	Hall 1
	White	Hall 2
	Orange	Hall 3

• Dimensions



• Mechanical Parameters Ball Bearings

	UNIT
Radial play	0.02mm@450g
Axial play	0.08mm@450g
Max Radial force	10N@10mm
Max Axial force	2N

• Other parameters

	TEMPERATURE
Winding Type	Star connection
Hall Effect Angle	120 degree
Dielectric Strength	600VAC/1S
Insulation Resistance	100MΩ, 500VDC
Insulation class	Class B
Ambient Temperature	-20°C ~ +50°C

GSBLD36R Series

• Motor Specification

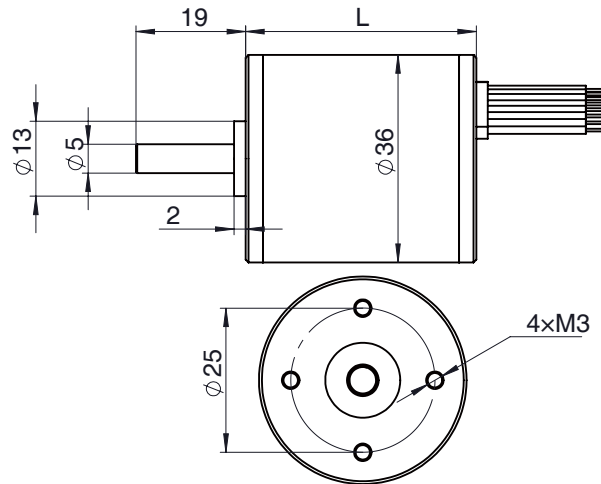
	36L45	36L55
• Number of poles	6 P	6 P
• Number of phases	3 PH	3 PH
• Nominal voltage	24 V	24 V
• No load speed	5700 RPM	5300 RPM
• Peak current	2.48 A	3.4 A
• Nominal speed	5000 RPM	4500 RPM
• Nominal torque	32 mNm	50 mNm
• Nominal current	0.94 A	1.36 A
• Peak torque	86 mNm	125 mNm
• Nominal power	17 W	23.5 W
• Line-to-line resistance	4.03 Ω	1.8 Ω
• Line-to-line inductance	1.49 mH	1 mH
• Torque constant	34.6 mNm/A	36.8 mNm/A
• Back EMF	2.2 mV/rpm	2.95 mV/rpm
• Rotor inertia	16 g.cm ²	27 g.cm ²
• Motor length	45 mm	55 mm



• Wiring Instructions

TYPE	COLOR	FUNCTIONS
AWG22	Yellow	Phase 1
	Blue	Phase 2
	Green	Phase 3
AWG26	Red	VHall
	Black	GND
	Purple	Hall 1
	White	Hall 2
	Orange	Hall 3

• Dimensions



• Mechanical Parameters Ball Bearings

	UNIT
Radial play	0.02mm@450g
Axial play	0.08mm@450g
Max Radial force	15N@10mm
Max Axial force	10N

• Other parameters

	TEMPERATURE
Winding Type	Star connection
Hall Effect Angle	120 degree
Dielectric Strength	600VAC/1S
Insulation Resistance	100MΩ, 500VDC
Insulation class	Class B
Ambient Temperature	-20°C ~ +50°C

GSBLD42R Series

• Motor Specification

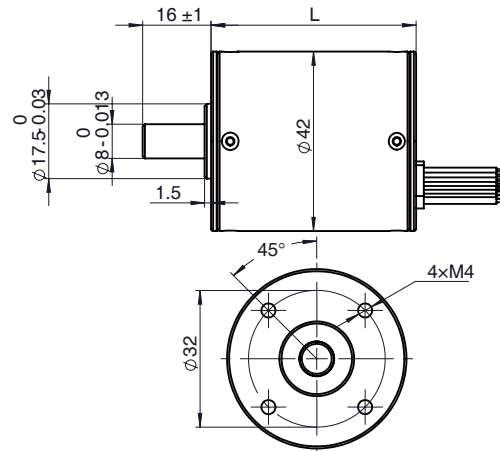
	42L48	42L70
• Number of poles	10 P	10 P
• Number of phases	3 PH	3 PH
• Nominal voltage	24 V	24 V
• No load speed	4500 RPM	4600 RPM
• Peak current	2.84 A	4.82 A
• Nominal speed	3900 RPM	3800 RPM
• Nominal torque	50 mNm	114 mNm
• Nominal current	1.1 A	2.48 A
• Peak torque	128 mNm	222 mNm
• Nominal power	20 W	45 W
• Line-to-line resistance	2.5 Ω	1.38 Ω
• Line-to-line inductance	1.1 mH	0.7 mH
• Torque constant	45 mNm/A	46 mNm/A
• Back EMF	3.05 mV/rpm	3.2 mV/rpm
• Rotor inertia	27 g.cm ²	52 g.cm ²
• Motor length	48 mm	70 mm



• Wiring Instructions

TYPE	COLOR	FUNCTIONS
AWG22	Yellow	Phase 1
	Blue	Phase 2
	Green	Phase 3
AWG26	Red	VHall
	Black	GND
	Purple	Hall 1
	White	Hall 2
	Orange	Hall 3

• Dimensions



• Mechanical Parameters Ball Bearings

	UNIT
Radial play	0.02mm@450g
Axial play	0.08mm@450g
Max Radial force	10N@10mm
Max Axial force	15N

• Other parameters

	TEMPERATURE
Winding Type	Star connection
Hall Effect Angle	120 degree
Dielectric Strength	600VAC/1S
Insulation Resistance	100MΩ, 500VDC
Insulation class	Class B
Ambient Temperature	-20°C ~ +50°C

GSBLD52R Series

• Motor Specification

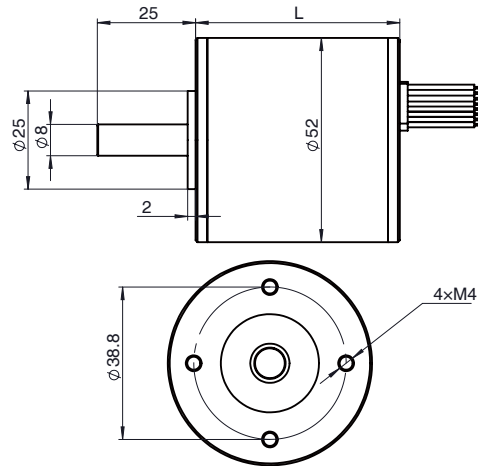
	52L45	52L60
· Number of poles	6 P	6 P
· Number of phases	3 PH	3 PH
· Nominal voltage	24 V	24 V
· No load speed	4500 RPM	4900 RPM
· Peak current	6.25 A	10.8 A
· Nominal speed	4000 RPM	4000 RPM
· Nominal torque	108 mNm	180 mNm
· Nominal current	2.5 A	4.2 A
· Peak torque	270 mNm	462 mNm
· Nominal power	45 W	75 W
· Line-to-line resistance	1.21 Ω	0.45 Ω
· Line-to-line inductance	1.67 mH	0.86 mH
· Torque constant	43.2 mNm/A	42.8 mNm/A
· Back EMF	5.4 mV/rpm	4.8 mV/rpm
· Rotor inertia	210 g.cm ²	350 g.cm ²
· Motor length	45 mm	60 mm



• Wiring Instructions

TYPE	COLOR	FUNCTIONS
AWG22	Yellow	Phase 1
	Blue	Phase 2
	Green	Phase 3
AWG26	Red	VHall
	Black	GND
	Purple	Hall 1
	White	Hall 2
	Orange	Hall 3

• Dimensions



• Mechanical Parameters Ball Bearings

	UNIT
Radial play	0.02mm@450g
Axial play	0.08mm@450g
Max Radial force	40N@10mm
Max Axial force	20N

• Other parameters

	TEMPERATURE
Winding Type	Star connection
Hall Effect Angle	120 degree
Dielectric Strength	600VAC/1S
Insulation Resistance	100MΩ, 500VDC
Insulation class	Class B
Ambient Temperature	-20°C ~ +50°C

GSBLD57R Series

• Motor Specification

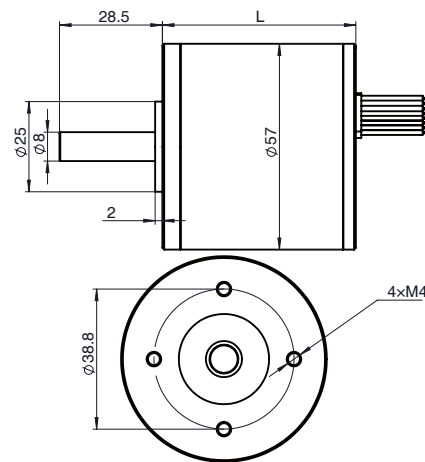
	57L56	57L86
· Number of poles	4 P	4 P
· Number of phases	3 PH	3 PH
· Nominal voltage	24 V	24 V
· No load speed	3500 RPM	3500 RPM
· Peak current	9.5 A	16 A
· Nominal speed	3000 RPM	3000 RPM
· Nominal torque	180 mNm	400 mNm
· Nominal current	3.17 A	6.6 A
· Peak torque	540 mNm	1000 mNm
· Nominal power	56 W	104 W
· Line-to-line resistance	0.9 Ω	1.1 Ω
· Line-to-line inductance	0.96 mH	0.77 mH
· Torque constant	57 mNm/A	62 mNm/A
· Back EMF	5.9 mV/rpm	6.5 mV/rpm
· Rotor inertia	77 g.cm ²	156 g.cm ²
· Motor length	56.5 mm	86.5 mm



• Wiring Instructions

TYPE	COLOR	FUNCTIONS
AWG22	Yellow	Phase 1
	Blue	Phase 2
	Green	Phase 3
AWG26	Red	VHall
	Black	GND
	Purple	Hall 1
	White	Hall 2
	Orange	Hall 3

• Dimensions



• Mechanical Parameters Ball Bearings

	UNIT
Radial play	0.02mm@450g
Axial play	0.08mm@450g
Max Radial force	75N@10cm
Max Axial force	20N

• Other parameters

	TEMPERATURE
Winding Type	Star connection
Hall Effect Angle	120 degree
Dielectric Strength	600VAC/1S
Insulation Resistance	100MΩ, 500VDC
Insulation class	Class B
Ambient Temperature	-20°C ~ +50°C

GSBLD60R Series

• Motor Specification

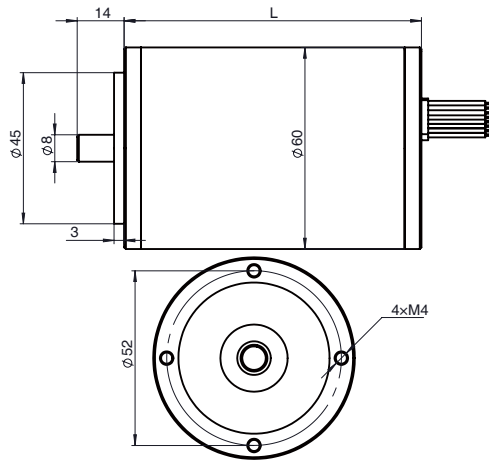
	60L90	60L110
· Number of poles	10 P	10 P
· Number of phases	3 PH	3 PH
· Nominal voltage	24 V	24 V
· No load speed	3500 RPM	3500 RPM
· Peak current	30 A	61.3 A
· Nominal speed	3000 RPM	3000 RPM
· Nominal torque	0.6 Nm	1.2 Nm
· Nominal current	10 A	21 A
· Peak torque	1.8 Nm	3.5 Nm
· Nominal power	188 W	377 W
· Line-to-line resistance	0.4 Ω	0.2 Ω
· Line-to-line inductance	0.7 mH	0.35 mH
· Torque constant	60 mNm/A	57.1 mNm/A
· Back EMF	6.2 mV/rpm	6.2 mV/rpm
· Rotor inertia	0.9 kg.cm ²	1.3 kg.cm ²
· Motor length	90 mm	110 mm



• Wiring Instructions

TYPE	COLOR	FUNCTIONS
AWG22	Yellow	Phase 1
	Blue	Phase 2
	Green	Phase 3
AWG26	Red	VHall
	Black	GND
	Purple	Hall 1
	White	Hall 2
	Orange	Hall 3

• Dimensions



• Mechanical Parameters Ball Bearings

	UNIT
Radial play	0.02mm@450g
Axial play	0.08mm@450g
Max Radial force	100N@10mm
Max Axial force	25N

• Other parameters

	TEMPERATURE
Winding Type	Star connection
Hall Effect Angle	120 degree
Dielectric Strength	600VAC/1S
Insulation Resistance	100MΩ, 500VDC
Insulation class	Class B
Ambient Temperature	-20°C ~ +50°C

GSBLD80R Series

• Motor Specification

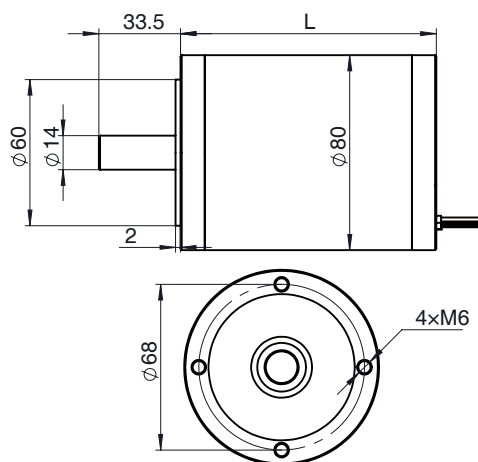
	80L105	80L135
• Number of poles	10 P	10 P
• Number of phases	3 PH	3 PH
• Nominal voltage	24 V	24 V
• No load speed	3500 RPM	3500 RPM
• Peak current	24 A	58 A
• Nominal speed	3000 RPM	3000 RPM
• Nominal torque	0.8 Nm	1.4 Nm
• Nominal current	12 A	23 A
• Peak torque	2 Nm	3.5 Nm
• Nominal power	251 W	439 W
• Line-to-line resistance	90 mΩ	70 mΩ
• Line-to-line inductance	0.28 mH	0.2 mH
• Torque constant	66.6 mNm/A	61 mNm/A
• Back EMF	6.1 mV/rpm	6.1 mV/rpm
• Rotor inertia	1.5 kg.cm ²	2.2 kg.cm ²
• Motor length	105 mm	135 mm



• Wiring Instructions

TYPE	COLOR	FUNCTIONS
AWG22	Yellow	Phase 1
	Blue	Phase 2
	Green	Phase 3
AWG26	Red	VHall
	Black	GND
	Purple	Hall 1
	White	Hall 2
	Orange	Hall 3

• Dimensions



• Mechanical Parameters Ball Bearings

	UNIT
Radial play	0.02mm@450g
Axial play	0.08mm@450g
Max Radial force	220N@10mm
Max Axial force	60N

• Other parameters

	TEMPERATURE
Winding Type	Star connection
Hall Effect Angle	120 degree
Dielectric Strength	600VAC/1S
Insulation Resistance	100MΩ, 500VDC
Insulation class	Class B
Ambient Temperature	-20°C ~ +50°C

GSBLD90R Series

• Motor Specification

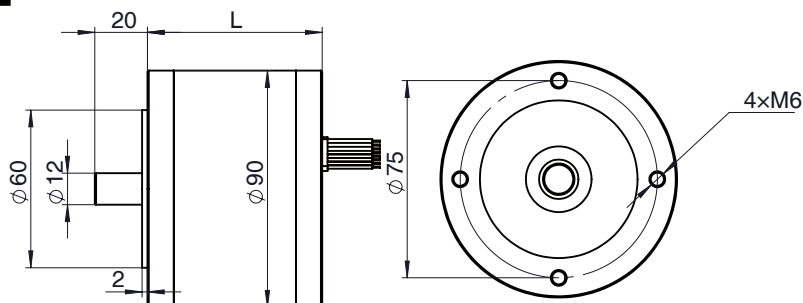
	90L75	90L85
· Number of poles	8 P	8 P
· Number of phases	3 PH	3 PH
· Nominal voltage	24 V	24 V
· No load speed	3500 RPM	3500 RPM
· Peak current	15 A	58 A
· Nominal speed	3000 RPM	3000 RPM
· Nominal torque	1 Nm	1.5 Nm
· Nominal current	11 A	17 A
· Peak torque	2.5 Nm	3.75 Nm
· Nominal power	314 W	471 W
· Line-to-line resistance	47 mΩ	40 mΩ
· Line-to-line inductance	0.26 mH	0.18 mH
· Torque constant	68 mNm/A	65 mNm/A
· Back EMF	6.1 mV/rpm	6.1 mV/rpm
· Rotor inertia	1 kg.cm ²	1.2 kg.cm ²
· Motor length	75 mm	85 mm



• Wiring Instructions

TYPE	COLOR	FUNCTIONS
AWG22	Yellow	Phase 1
	Blue	Phase 2
	Green	Phase 3
AWG26	Red	VHall
	Black	GND
	Purple	Hall 1
	White	Hall 2
	Orange	Hall 3

• Dimensions



• Mechanical Parameters Ball Bearings

	UNIT
Radial play	0.02mm@450g
Axial play	0.08mm@450g
Max Radial force	250N@10mm
Max Axial force	70N

• Other parameters

	TEMPERATURE
Winding Type	Star connection
Hall Effect Angle	120 degree
Dielectric Strength	600VAC/1S
Insulation Resistance	100MΩ, 500VDC
Insulation class	Class B
Ambient Temperature	-20°C ~ +50°C

GSBLD100R Series

• Motor Specification

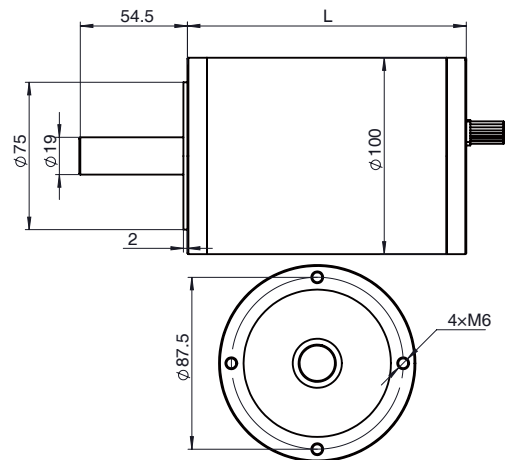
	100L140	100L170
• Number of poles	10 P	10 P
• Number of phases	3 PH	3 PH
• Nominal voltage	48 V	48 V
• No load speed	3500 RPM	3500 RPM
• Peak current	52.5 A	87.5 A
• Nominal speed	3000 RPM	3000 RPM
• Nominal torque	3 Nm	5 Nm
• Nominal current	21 A	35 A
• Peak torque	7.5 Nm	12 Nm
• Nominal power	942 W	1570 W
• Line-to-line resistance	22 mΩ	15 mΩ
• Line-to-line inductance	0.2 mH	0.15 mH
• Torque constant	85 mNm/A	87 mNm/A
• Back EMF	6.4 mV/rpm	6.4 mV/rpm
• Rotor inertia	1.3 kg.cm ²	1.8 kg.cm ²
• Motor length	140 mm	170 mm



• Wiring Instructions

TYPE	COLOR	FUNCTIONS
AWG22	Yellow	Phase 1
	Blue	Phase 2
	Green	Phase 3
AWG26	Red	VHall
	Black	GND
	Purple	Hall 1
	White	Hall 2
	Orange	Hall 3

• Dimensions



• Mechanical Parameters Ball Bearings

	UNIT
Radial play	0.02mm@450g
Axial play	0.08mm@450g
Max Radial force	400N@10mm
Max Axial force	120N

• Other parameters

	TEMPERATURE
Winding Type	Star connection
Hall Effect Angle	120 degree
Dielectric Strength	600VAC/1S
Insulation Resistance	100MΩ, 500VDC
Insulation class	Class B
Ambient Temperature	-20°C ~ +50°C

GSBLD110R Series

• Motor Specification

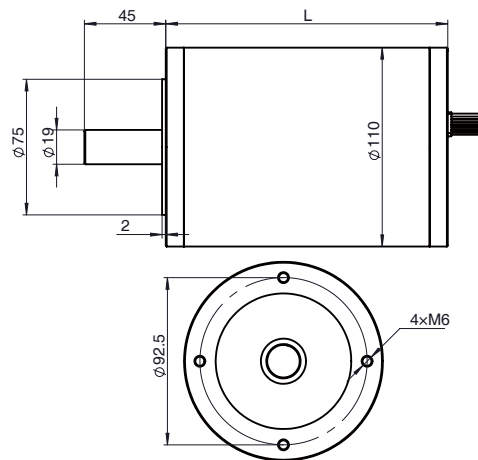
	110L110	110L150
• Number of poles	10 P	10 P
• Number of phases	3 PH	3 PH
• Nominal voltage	48 V	48 V
• No load speed	3500 RPM	3500 RPM
• Peak current	52.5 A	87.5 A
• Nominal speed	3000 RPM	3000 RPM
• Nominal torque	3.5 Nm	4.5 Nm
• Nominal current	28 A	36 A
• Peak torque	8.75 Nm	11.25 Nm
• Nominal power	1100 W	1413 W
• Line-to-line resistance	10 mΩ	9 mΩ
• Line-to-line inductance	0.16 mH	0.14 mH
• Torque constant	125 mNm/A	125 mNm/A
• Back EMF	6.4 mV/rpm	6.4 mV/rpm
• Rotor inertia	1.5 kg.cm ²	2.1 kg.cm ²
• Motor length	110 mm	150 mm



• Wiring Instructions

TYPE	COLOR	FUNCTIONS
AWG22	Yellow	Phase 1
	Blue	Phase 2
	Green	Phase 3
AWG26	Red	VHall
	Black	GND
	Purple	Hall 1
	White	Hall 2
	Orange	Hall 3

• Dimensions



• Mechanical Parameters Ball Bearings

	UNIT
Radial play	0.02mm@450g
Axial play	0.08mm@450g
Max Radial force	450N@10mm
Max Axial force	150N

• Other parameters

	TEMPERATURE
Winding Type	Star connection
Hall Effect Angle	120 degree
Dielectric Strength	600VAC/1S
Insulation Resistance	100MΩ, 500VDC
Insulation class	Class B
Ambient Temperature	-20°C ~ +50°C

GSBLD42S Series

• Motor Specification

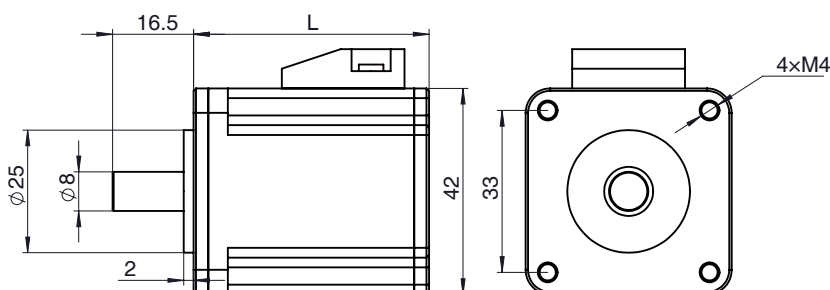
	42L48	42L70
· Number of poles	10 P	10 P
· Number of phases	3 PH	3 PH
· Nominal voltage	24 V	24 V
· No load speed	4500 RPM	4600 RPM
· Peak current	2.84 A	4.82 A
· Nominal speed	3900 RPM	3800 RPM
· Nominal torque	50 mNm	144 mNm
· Nominal current	1.1 A	2.48 A
· Peak torque	128 mNm	222 mNm
· Nominal power	20 W	45 W
· Line-to-line resistance	2.5 Ω	1.38 Ω
· Line-to-line inductance	1.1 mH	0.7 mH
· Torque constant	45 mNm/A	46 mNm/A
· Back EMF	3.05 mV/rpm	3.2 mV/rpm
· Rotor inertia	27 g.cm ²	52 g.cm ²
· Motor length	48 mm	70 mm



• Wiring Instructions

TYPE	COLOR	FUNCTIONS
AWG22	Yellow	Phase 1
	Blue	Phase 2
	Green	Phase 3
AWG26	Red	VHall
	Black	GND
	Purple	Hall 1
	White	Hall 2
	Orange	Hall 3

• Dimensions



• Mechanical Parameters Ball Bearings

	UNIT
Radial play	0.02mm@450g
Axial play	0.08mm@450g
Max Radial force	10N@10mm
Max Axial force	15N

• Other parameters

	TEMPERATURE
Winding Type	Star connection
Hall Effect Angle(Electrical Angle)	120 degree
Dielectric Strength	600VAC/1S
Insulation Resistance	100MΩ, 500VDC
Insulation class	Class B
Ambient Temperature	-20°C ~ +50°C

GSBLD52S Series

• Motor Specification

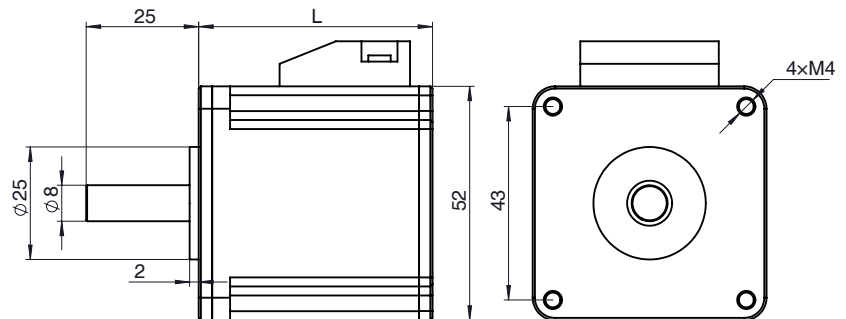
	52L45	52L60
· Number of poles	6 P	6 P
· Number of phases	3 PH	3 PH
· Nominal voltage	24 V	24 V
· No load speed	4500 RPM	4900 RPM
· Peak current	6.25 A	10.8 A
· Nominal speed	4000 RPM	4000 RPM
· Nominal torque	108 mNm	180 mNm
· Nominal current	2.5 A	4.2 A
· Peak torque	270 mNm	462 mNm
· Nominal power	45 W	75 W
· Line-to-line resistance	1.21 Ω	0.45 Ω
· Line-to-line inductance	1.67 mH	0.86 mH
· Torque constant	43.2 mNm/A	42.8 mNm/A
· Back EMF	5.4 mV/rpm	4.8 mV/rpm
· Rotor inertia	210 g.cm ²	350 g.cm ²
· Motor length	45 mm	60 mm



• Wiring Instructions

TYPE	COLOR	FUNCTIONS
AWG22	Yellow	Phase 1
	Blue	Phase 2
	Green	Phase 3
AWG26	Red	VHall
	Black	GND
	Purple	Hall 1
	White	Hall 2
	Orange	Hall 3

• Dimensions



• Mechanical Parameters Ball Bearings

	UNIT
Radial play	0.02mm@450g
Axial play	0.08mm@450g
Max Radial force	40N@10mm
Max Axial force	20N

• Other parameters

	TEMPERATURE
Winding Type	Star connection
Hall Effect Angle(Electrical Angle)	120 degree
Dielectric Strength	600VAC/1S
Insulation Resistance	100MΩ, 500VDC
Insulation class	Class B
Ambient Temperature	-20°C ~ +50°C

GSBLD57S Series

• Motor Specification

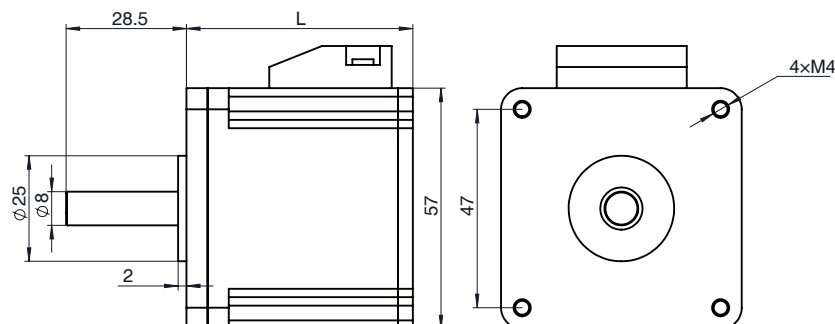
	57L56	57L86
• Number of poles	4 P	4 P
• Number of phases	3 PH	3 PH
• Nominal voltage	24 V	24 V
• No load speed	3500 RPM	3500 RPM
• Peak current	9.5 A	16 A
• Nominal speed	3000 RPM	3000 RPM
• Nominal torque	108 mNm	400 mNm
• Nominal current	3.17 A	6.6 A
• Peak torque	540 mNm	1000 mNm
• Nominal power	56 W	104 W
• Line-to-line resistance	0.9 Ω	1.1 Ω
• Line-to-line inductance	0.96 mH	0.77 mH
• Torque constant	57 mNm/A	62 mNm/A
• Back EMF	5.9 mV/rpm	6.5 mV/rpm
• Rotor inertia	77 g.cm ²	156 g.cm ²
• Motor length	56.5 mm	86.5 mm



• Wiring Instructions

TYPE	COLOR	FUNCTIONS
AWG22	Yellow	Phase 1
	Blue	Phase 2
	Green	Phase 3
AWG26	Red	VHall
	Black	GND
	Purple	Hall 1
	White	Hall 2
	Orange	Hall 3

• Dimensions



• Mechanical Parameters Ball Bearings

	UNIT
Radial play	0.02mm@450g
Axial play	0.08mm@450g
Max Radial force	75N@10mm
Max Axial force	20N

• Other parameters

	TEMPERATURE
Winding Type	Star connection
Hall Effect Angle(Electrical Angle)	120 degree
Dielectric Strength	600VAC/1S
Insulation Resistance	100MΩ, 500VDC
Insulation class	Class B
Ambient Temperature	-20°C ~ +50°C

GSBLD60S Series

• Motor Specification

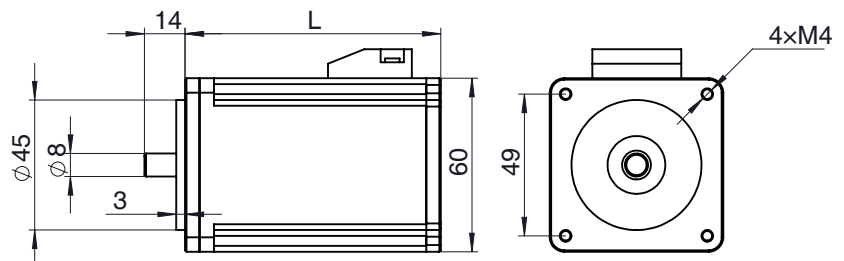
	60L90	60L110
• Number of poles	10 P	10 P
• Number of phases	3 PH	3 PH
• Nominal voltage	24 V	24 V
• No load speed	3500 RPM	3500 RPM
• Peak current	30 A	61.3 A
• Nominal speed	3000 RPM	3000 RPM
• Nominal torque	0.6 Nm	1.2 Nm
• Nominal current	10 A	21 A
• Peak torque	1.8 Nm	3.5 Nm
• Nominal power	188 W	377 W
• Line-to-line resistance	0.4 Ω	0.2 Ω
• Line-to-line inductance	0.7 mH	0.35 mH
• Torque constant	60 mNm/A	57.1 mNm/A
• Back EMF	6.2 mV/rpm	6.2 mV/rpm
• Rotor inertia	0.9 g.cm ²	1.3 g.cm ²
• Motor length	90 mm	110 mm



• Wiring Instructions

TYPE	COLOR	FUNCTIONS
AWG22	Yellow	Phase 1
	Blue	Phase 2
	Green	Phase 3
AWG26	Red	VHall
	Black	GND
	Purple	Hall 1
	White	Hall 2
	Orange	Hall 3

• Dimensions



• Mechanical Parameters Ball Bearings

	UNIT
Radial play	0.02mm@450g
Axial play	0.08mm@450g
Max Radial force	100N@10mm
Max Axial force	25N

• Other parameters

	TEMPERATURE
Winding Type	Star connection
Hall Effect Angle(Electrical Angle)	120 degree
Dielectric Strength	600VAC/1S
Insulation Resistance	100MΩ, 500VDC
Insulation class	Class B
Ambient Temperature	-20°C ~ +50°C

GSBLD80S Series

• Motor Specification

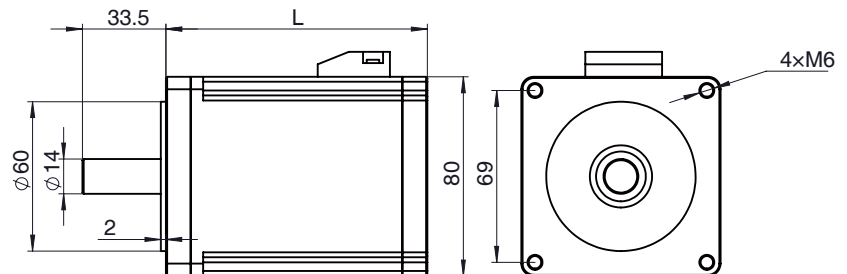
	80L105	80L135
· Number of poles	10 P	10 P
· Number of phases	3 PH	3 PH
· Nominal voltage	24 V	24 V
· No load speed	3500 RPM	3500 RPM
· Peak current	24 A	58 A
· Nominal speed	3000 RPM	3000 RPM
· Nominal torque	0.8 Nm	1.4 Nm
· Nominal current	12 A	23 A
· Peak torque	2 Nm	3.5 Nm
· Nominal power	251 W	439 W
· Line-to-line resistance	90 mΩ	70 mΩ
· Line-to-line inductance	0.28 mH	0.2 mH
· Torque constant	66.6 mNm/A	61 mNm/A
· Back EMF	6.1 mV/rpm	6.1 mV/rpm
· Rotor inertia	1.5 g.cm ²	2.2 g.cm ²
· Motor length	105 mm	135 mm



• Wiring Instructions

TYPE	COLOR	FUNCTIONS
AWG22	Yellow	Phase 1
	Blue	Phase 2
	Green	Phase 3
AWG26	Red	VHall
	Black	GND
	Purple	Hall 1
	White	Hall 2
	Orange	Hall 3

• Dimensions



• Mechanical Parameters Ball Bearings

	UNIT
Radial play	0.02mm@450g
Axial play	0.08mm@450g
Max Radial force	220N@10mm
Max Axial force	60N

• Other parameters

	TEMPERATURE
Winding Type	Star connection
Hall Effect Angle(Electrical Angle)	120 degree
Dielectric Strength	600VAC/1S
Insulation Resistance	100MΩ, 500VDC
Insulation class	Class B
Ambient Temperature	-20°C ~ +50°C

GSBLD90S Series

• Motor Specification

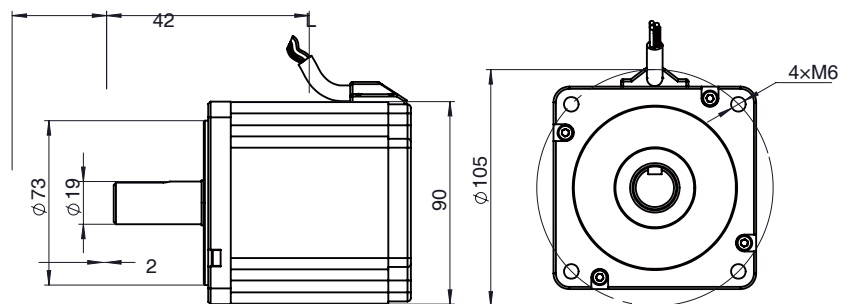
	90L75	90L85
· Number of poles	8 P	8 P
· Number of phases	3 PH	3 PH
· Nominal voltage	24 V	24 V
· No load speed	3500 RPM	3500 RPM
· Peak current	15 A	58 A
· Nominal speed	3000 RPM	3000 RPM
· Nominal torque	1 Nm	1.5 Nm
· Nominal current	11 A	27 A
· Peak torque	2.5 Nm	3.75 Nm
· Nominal power	314 W	471 W
· Line-to-line resistance	47 mΩ	40 mΩ
· Line-to-line inductance	0.26 mH	0.18 mH
· Torque constant	68 mNm/A	65 mNm/A
· Back EMF	6.1 mV/rpm	6.1 mV/rpm
· Rotor inertia	1 kg.cm ²	1.2 kg.cm ²
· Motor length	75 mm	85 mm



• Wiring Instructions

TYPE	COLOR	FUNCTIONS
AWG22	Yellow	Phase 1
	Blue	Phase 2
	Green	Phase 3
AWG26	Red	VHall
	Black	GND
	Purple	Hall 1
	White	Hall 2
	Orange	Hall 3

• Dimensions



• Mechanical Parameters Ball Bearings

	UNIT
Radial play	0.02mm@450g
Axial play	0.08mm@450g
Max Radial force	250N@10mm
Max Axial force	70N

• Other parameters

	TEMPERATURE
Winding Type	Star connection
Hall Effect Angle(Electrical Angle)	120 degree
Dielectric Strength	600VAC/1S
Insulation Resistance	100MΩ, 500VDC
Insulation class	Class B
Ambient Temperature	-20°C ~ +50°C

GSBLD100S Series

• Motor Specification

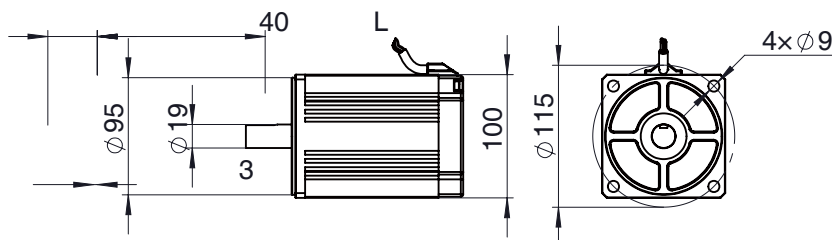
	100L140	100L170
• Number of poles	10 P	10 P
• Number of phases	3 PH	3 PH
• Nominal voltage	48 V	48 V
• No load speed	3500 RPM	3500 RPM
• Peak current	52.5 A	87.5 A
• Nominal speed	3000 RPM	3000 RPM
• Nominal torque	3 Nm	5 Nm
• Nominal current	21 A	35 A
• Peak torque	7.5 Nm	12 Nm
• Nominal power	942 W	1570 W
• Line-to-line resistance	22 mΩ	15 mΩ
• Line-to-line inductance	0.2 mH	0.15 mH
• Torque constant	85 mNm/A	87 mNm/A
• Back EMF	6.4 mV/rpm	6.4 mV/rpm
• Rotor inertia	1.3 kg.cm ²	1.8 kg.cm ²
• Motor length	140 mm	170 mm



• Wiring Instructions

TYPE	COLOR	FUNCTIONS
AWG22	Yellow	Phase 1
	Blue	Phase 2
	Green	Phase 3
AWG26	Red	VHall
	Black	GND
	Purple	Hall 1
	White	Hall 2
	Orange	Hall 3

• Dimensions



• Mechanical Parameters Ball Bearings

	UNIT
Radial play	0.02mm@450g
Axial play	0.08mm@450g
Max Radial force	400N@10mm
Max Axial force	120N

• Other parameters

	TEMPERATURE
Winding Type	Star connection
Hall Effect Angle(Electrical Angle)	120 degree
Dielectric Strength	600VAC/1S
Insulation Resistance	100MΩ, 500VDC
Insulation class	Class B
Ambient Temperature	-20°C ~ +50°C

GSBLD110S Series

• Motor Specification

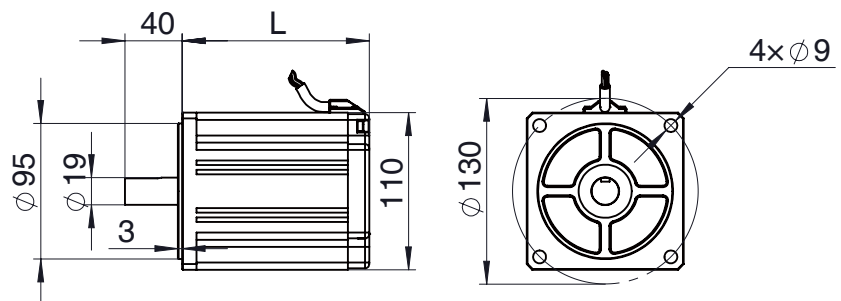
	110L110	110L150
• Number of poles	10 P	10 P
• Number of phases	3 PH	3 PH
• Nominal voltage	48 V	48 V
• No load speed	3500 RPM	3500 RPM
• Peak current	52.5 A	87.5 A
• Nominal speed	3000 RPM	3000 RPM
• Nominal torque	3.5 Nm	4.5 Nm
• Nominal current	28 A	36 A
• Peak torque	8.75 Nm	11.25 Nm
• Nominal power	1100 W	1413 W
• Line-to-line resistance	10 mΩ	9 mΩ
• Line-to-line inductance	0.16 mH	0.14 mH
• Torque constant	125 mNm/A	125 mNm/A
• Back EMF	6.4 mV/rpm	6.4 mV/rpm
• Rotor inertia	1.5 kg.cm ²	2.1 kg.cm ²
• Motor length	110 mm	150 mm



• Wiring Instructions

TYPE	COLOR	FUNCTIONS
AWG22	Yellow	Phase 1
	Blue	Phase 2
	Green	Phase 3
AWG26	Red	VHall
	Black	GND
	Purple	Hall 1
	White	Hall 2
	Orange	Hall 3

• Dimensions



• Mechanical Parameters Ball Bearings

	UNIT
Radial play	0.02mm@450g
Axial play	0.08mm@450g
Max Radial force	450N@10mm
Max Axial force	150N

• Other parameters

	TEMPERATURE
Winding Type	Star connection
Hall Effect Angle(Electrical Angle)	120 degree
Dielectric Strength	600VAC/1S
Insulation Resistance	100MΩ, 500VDC
Insulation class	Class B
Ambient Temperature	-20°C ~ +50°C

